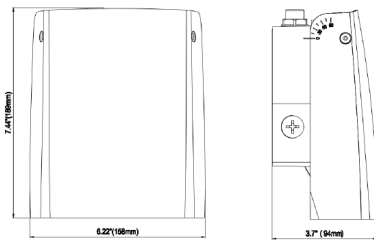


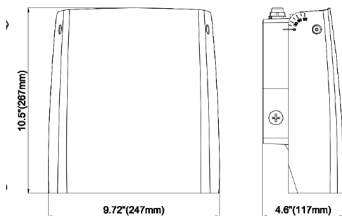
WALLMAX™ THIN CUT OFF
WP-AD SERIES



DIMENSIONS (SIZE 1): 15W, 20W & 29W:



DIMENSIONS (SIZE 2): 50W & 70W:



ETL CLASSIFIED



Intertek



PRODUCT DESCRIPTION:

WallMax™ Thin Cut Off Wall Packs offer a full Cutoff wall fixture while minimizing glare heads that aim light precisely while minimizing glare and backlight. These durable, energy-saving fixtures are perfect for lighting outdoor walkways, landscapes, parking areas and perimeters. Efficacy for the series reaches up to 131 lm/W, translating to 75 percent energy savings over HID luminaires. The fixtures include a variable voltage photocell that provides further energy savings.

FEATURES:

- Full Cutoff optics
- >80 CRI min
- Universal 120-277V power supply
- Power Factor > 0.9; THD < 20%
- 100,000-hour L70 lifetime, TM-21 standards @ 25°C
- Three 1/2 NPD knockouts available for mounting convenience
- Adjustability- up to 90 degree- is optional

CONTROLS:

120-277VAC Photocell:

- Power the fixture when light levels reach 20 lux or below
- Turn off the fixture at 30 lux or higher

WARRANTY:

10-year standard warranty with labor allowance*
(further details available at www.maxlite.com/warranties)

*Warranty Limitations: Product must be rated for the application per the Product Data Sheet (PDS); operated ≤16 hrs/day; in ambient of -29°F to 104°F.

*Up to \$25/unit; labor allowances of up to \$500/unit available for purchase – contact MaxLite representative for details.

MODEL SELECTION			Typical order example: WP-ADS20U-50B				
WP-AD			U	-		B	-
FAMILY	HOUSING SIZE	WATTAGE	VOLTAGE	-	CCT	FINISH	CONTROLS
WP-AD= WallMax™ Thin Cut Off	S= Small	15= 15W; 100W MH replacement 20= 20W; 150W MH replacement 29= 29W; 175W MH replacement	U= 120-277V	-	40= 4000K 50= 5000K	B= Bronze Contact Maxlite for additional finishes	- (OMIT)= None PC= 120-277V Photocell
	L= Large	50= 50W; 250W MH replacement 70= 70W; 250W MH replacement					

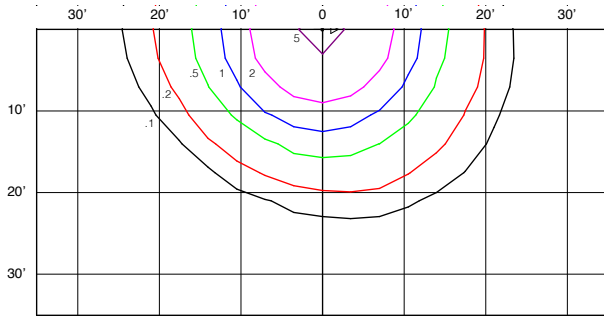
1. Please, contact Maxlite for position down only (not adjustable) models.

SPECIFICATIONS:

		WP-ADS15	WP-ADS20	WP-ADS29	WP-ADL50	WP-ADL70
ITEM	SPECIFICATION	DETAILS				
GENERAL PERFORMANCE	Input Power (W)	15	20	29	50	70
	Lumens Delivered (lm)	1,700	2,110	3,000	5,800	8,000
	Efficacy (lm/W)	up to 105			up to 131	up to 116
	CRI	>80				
	Lumen Maintenance (L70)	≥100,000				
	Color Temperature	4000K, 5000K				
	Spacing Criteria	Available Upon Request				
ELECTRICAL	Power Factor	>.90				
	Input Voltage	120-277V				
	Housing	Die-cast aluminum + Prismatic lens				
CERTIFICATION	Material Usage	RoHS compliant; no mercury				
	Environment	Outdoor, Wet location				
	Qualifications	FCC, ETL, DLC Standard				
	Warranty	10-year standard warranty*				
	Operating Temperature	-22°F to 131°F (-30°C to 55°C)				

LAYOUTS:

WP-ADS15U-50B:

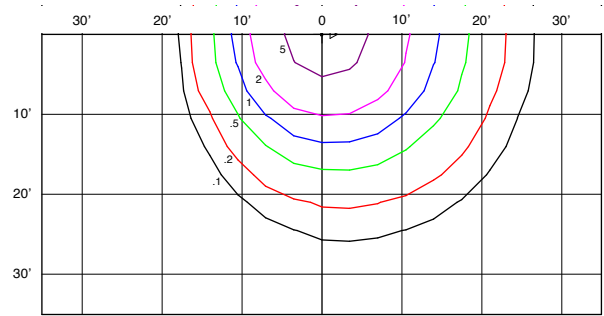


15W
10' MOUNTING HEIGHT

FOOT-CANDLE CORRECTION FACTOR:

NEW HEIGHT:	10'	15'	20'	25'
MULTIPLY BY:	1	0.67	0.50	0.40

WP-ADS20U-50B:

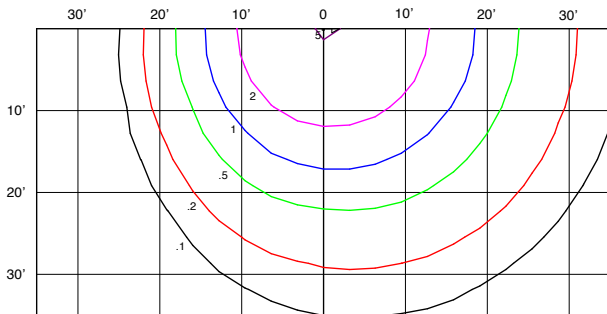


20W
10' MOUNTING HEIGHT

FOOT-CANDLE CORRECTION FACTOR:

NEW HEIGHT:	10'	15'	20'	25'
MULTIPLY BY:	1	0.67	0.50	0.40

WP-ADS29U-50B:

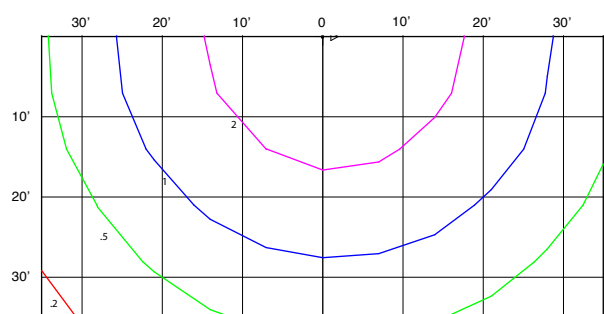


29W
15' MOUNTING HEIGHT

FOOT-CANDLE CORRECTION FACTOR:

NEW HEIGHT:	10'	15'	20'	25'
MULTIPLY BY:	1.50	1	0.75	0.50

WP-ADL70U-50B:



70W
30' MOUNTING HEIGHT

FOOT-CANDLE CORRECTION FACTOR:

NEW HEIGHT:	15'	20'	25'	30'
MULTIPLY BY:	2	1.50	1.20	1